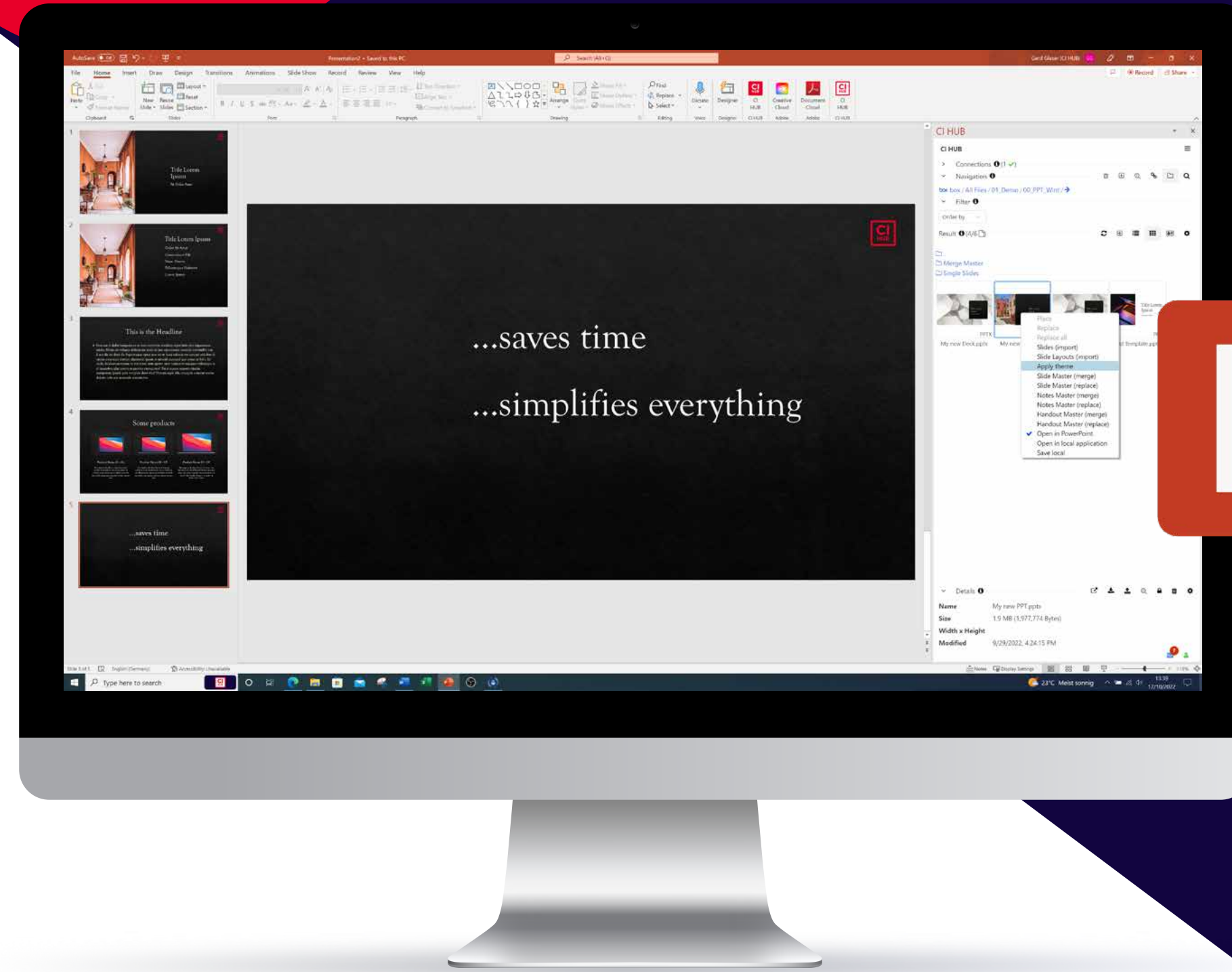




# INTRODUCING CI HUB Connector Pro for Microsoft PowerPoint



YOUR ULTIMATE GUIDE TO A NEW WAY OF CREATING PRESENTATIONS.

# TABLE OF CONTENTS

<b>Understanding The Benefits Of The CI HUB Connector Within Microsoft PowerPoint</b>	PAGE 03
<b>Immediately Noticeable Benefits</b>	
1. Connecting sources to your PowerPoint application – simultaneously!	PAGE 04
2. Stay in context with your work no need to switch apps for getting images	PAGE 05
3. Reduce the file size of your presentation	PAGE 06
<b>Smart Linking</b>	
Monitor all placed images and graphic elements	PAGE 07
<b>Managing Decks, Slides and Master</b>	
Use your DAM or Cloud Storage as Slide and Slide-Master Repository	PAGE 09
<b>Metadata</b>	
Using Metadata with Drag&Drop	PAGE 10
<b>And There Is More</b>	
Out of the box connected to stock images sites.	PAGE 11
Similarity search	PAGE 11
<b>Microsoft PowerPoint filetypes</b>	PAGE 12



# Time is money. Don't waste your budget!

Nowadays, all companies are using digital asset management systems or cloud storage systems as a central repository for images, documents, presentations and graphics.

As a PowerPoint presentation creator, you are forced to search these central repositories for your required images, graphic elements, or templates, download them, save them locally, and then import them into your deck.

Of course, this requires you to be familiar with these systems.

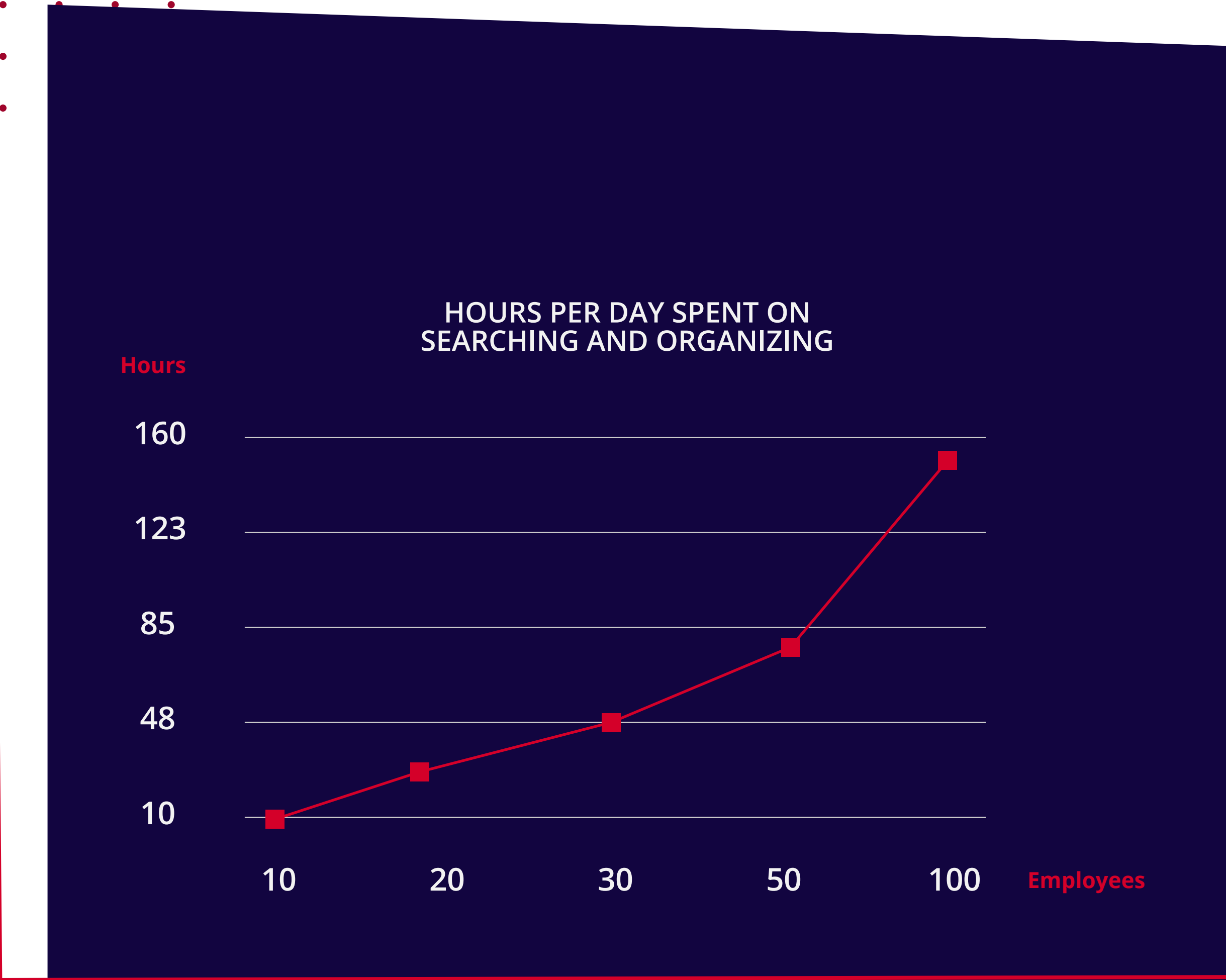
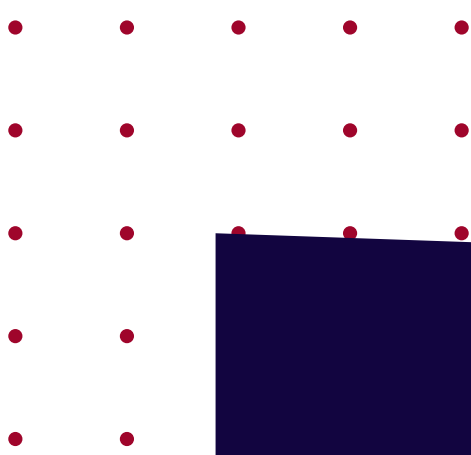
Isn't that extremely cumbersome? To constantly switch back and forth between PowerPoint and source systems? Losing track of your slides all the time?

Often, there are images in existing presentations that are no longer licensed or are outdated. How much time are you expecting to spend looking for them and replacing them with the most recent version?

According to you our clients, an average of **1 hour per employee is wasted each day** researching images and making them available for presentations.

Furthermore, it is not guaranteed that all images taken from older presentations can be used legally or commercially.

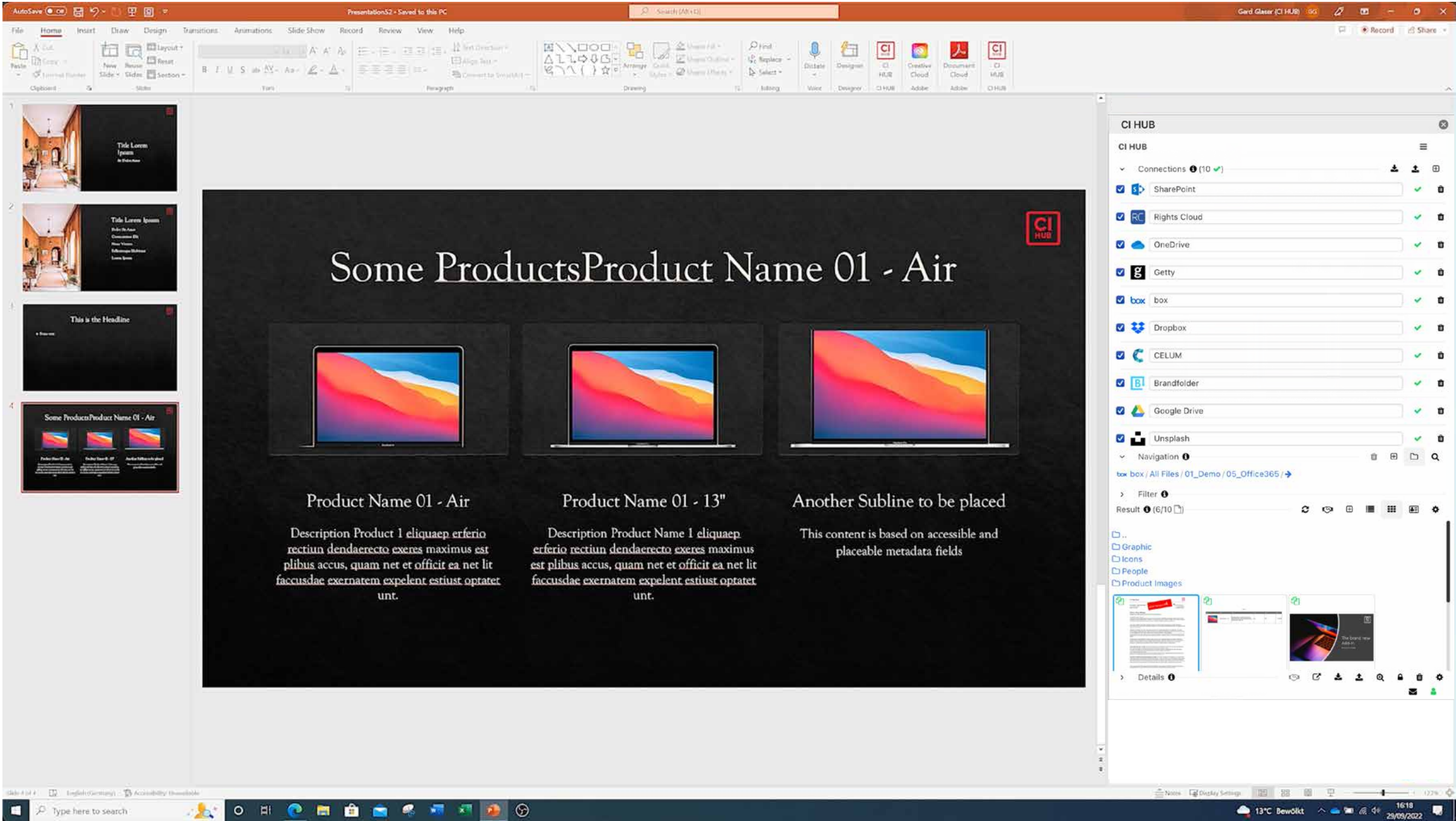
The use of additional systems, such as stock providers (e.g. Getty, iStock) or Work Management (e.g. Asana, Adobe Workfront), can increase the time spent on searching and organizing by a factor of 1.5.



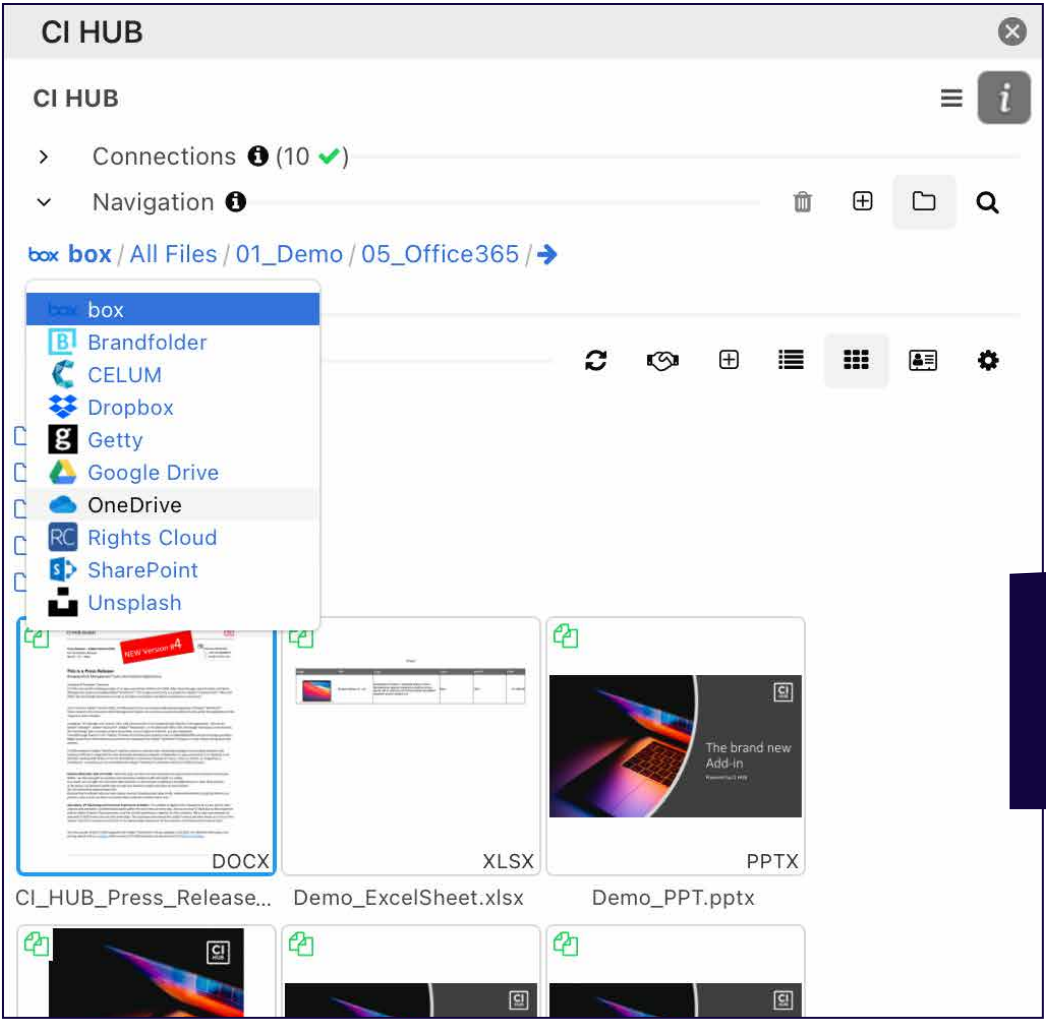


# IMMEDIATELY NOTICEABLE BENEFITS

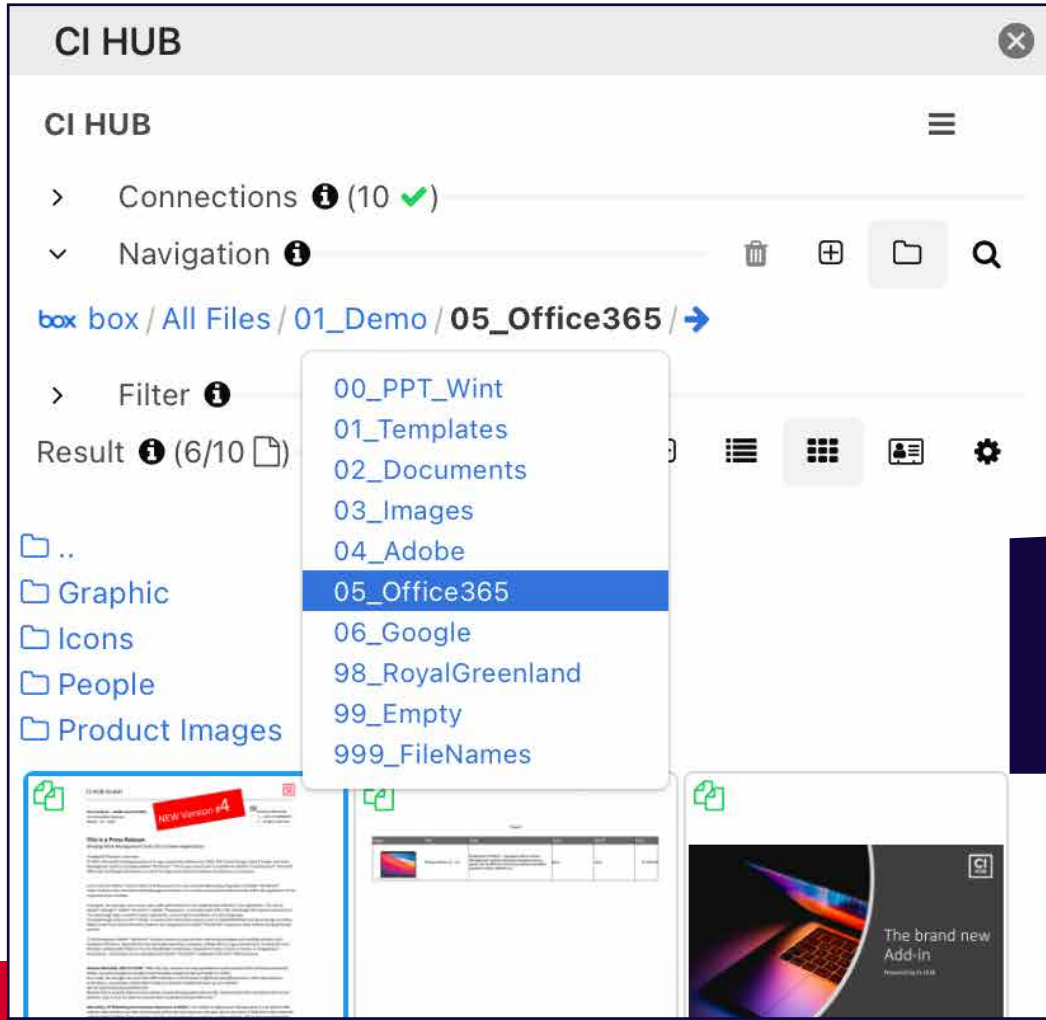
## 1. Connecting Sources to your PowerPoint application – simultaneously!



Connect your PowerPoint application to multiple sources at once in order to have access to the contents of several systems, which you can place in your presentation by dragging and dropping.



Dropdown to switch between systems



Navigate folder structures

**Benefit 01**  
PowerPoint provides access to the company's overall system environment and its content.

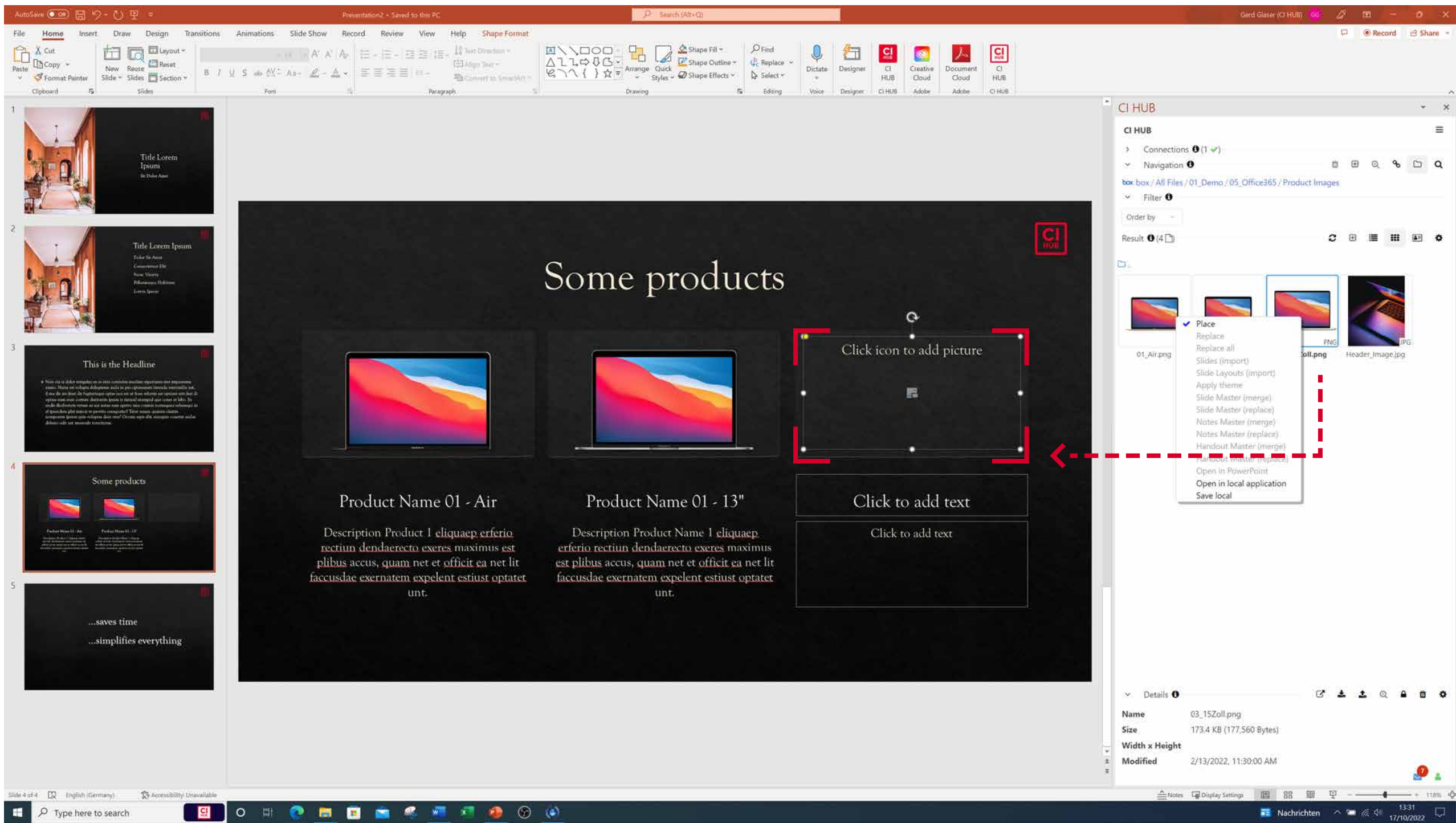
**Benefit 02**  
No time wasted in IT - Ready to go across the enterprise in minutes!



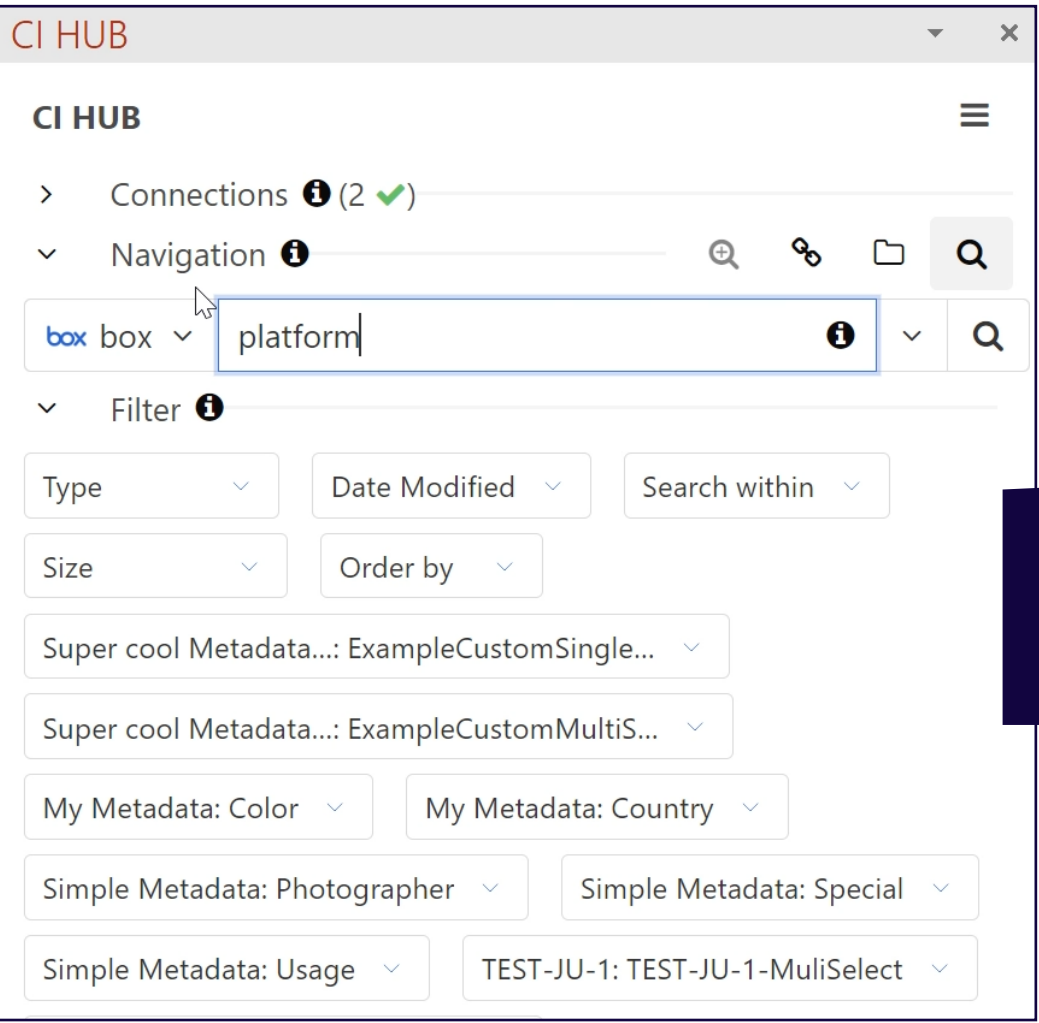


IMMEDIATELY NOTICEABLE BENEFITS

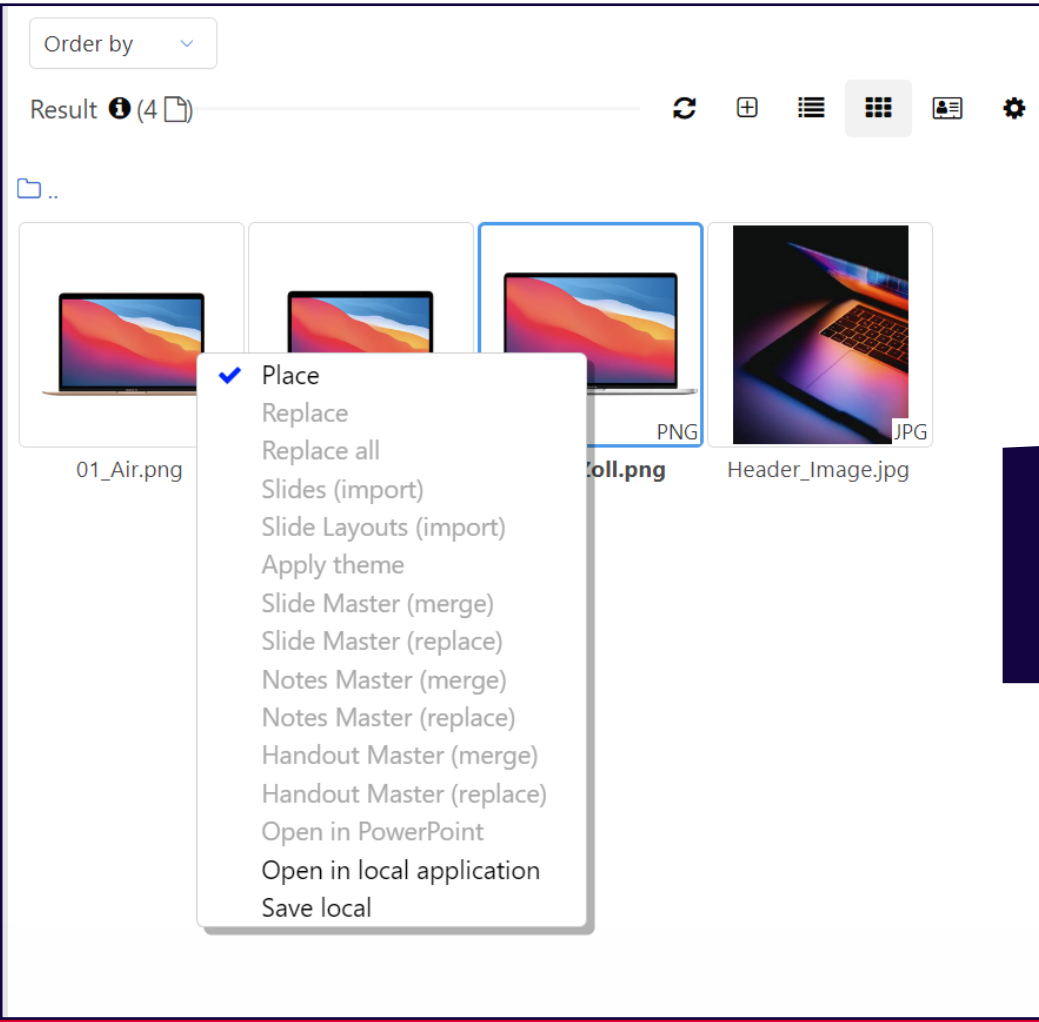
2. Stay in context with your work.  
No need to switch apps for getting images



Place your images and graphics by simply dragging and dropping them onto your slide. Stay in PowerPoint and focus only on the task at hand.



Use search and filter capabilities



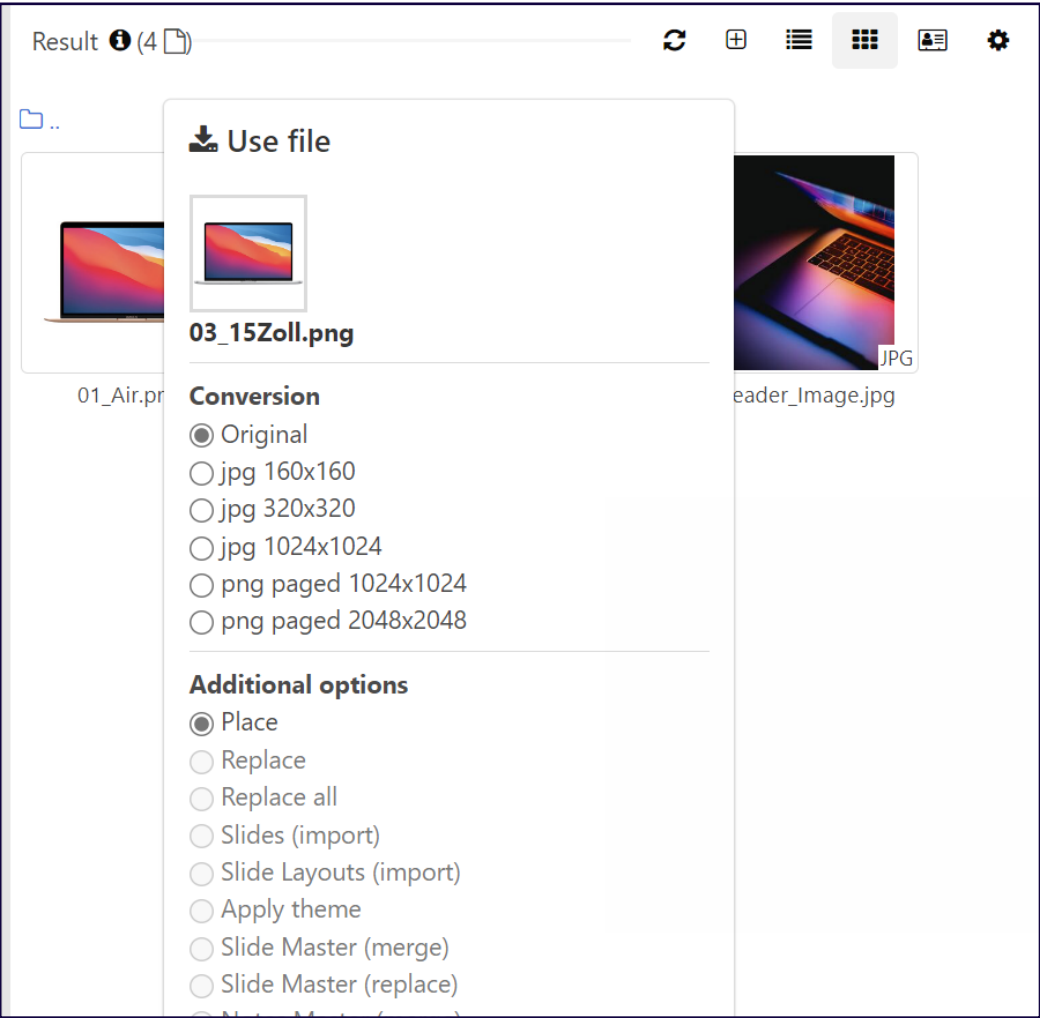
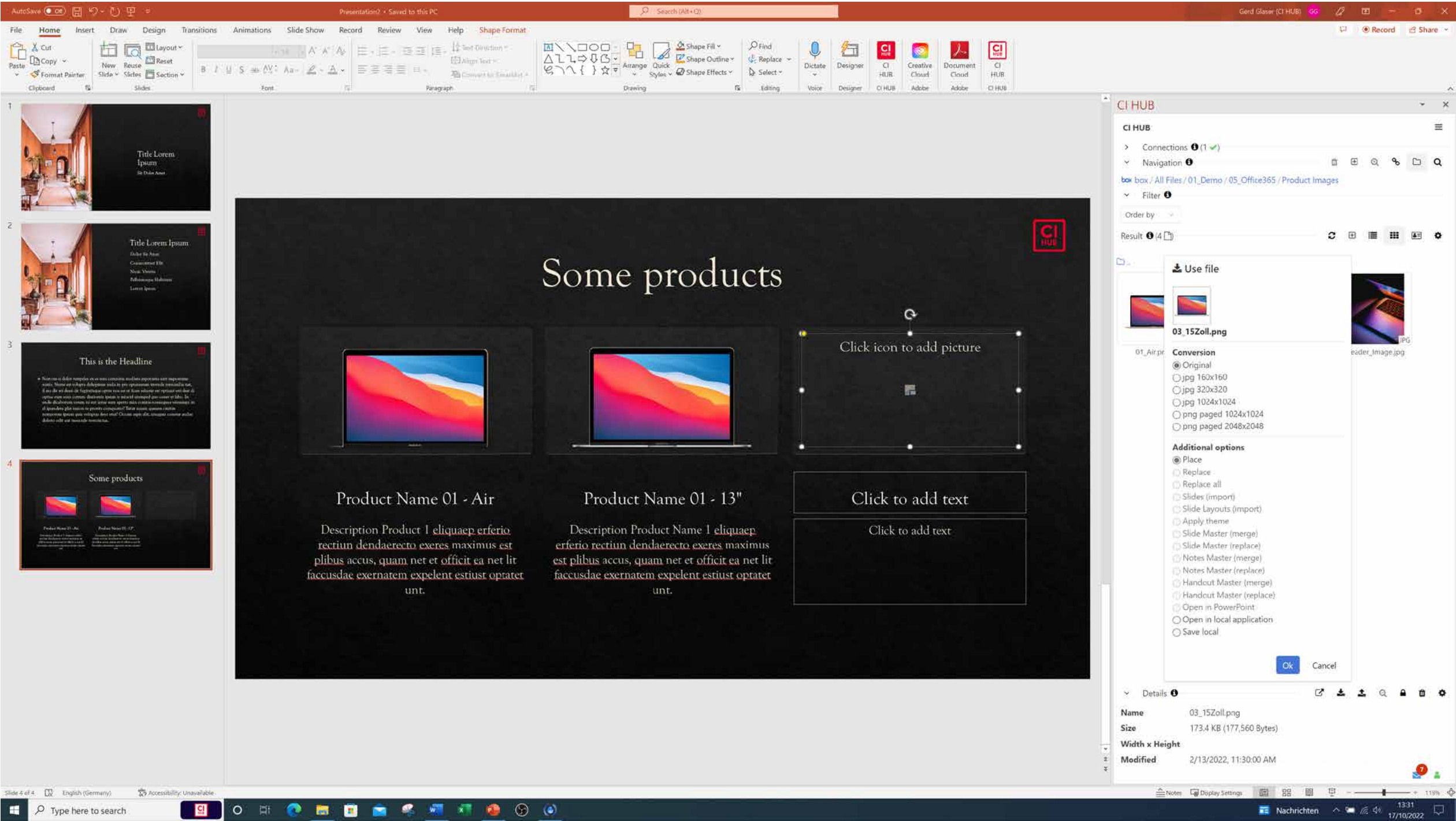
Select between "context sensitive" placement options

**Benefit**  
Find approved images from any system and use them in your slide. No need to switch applications!



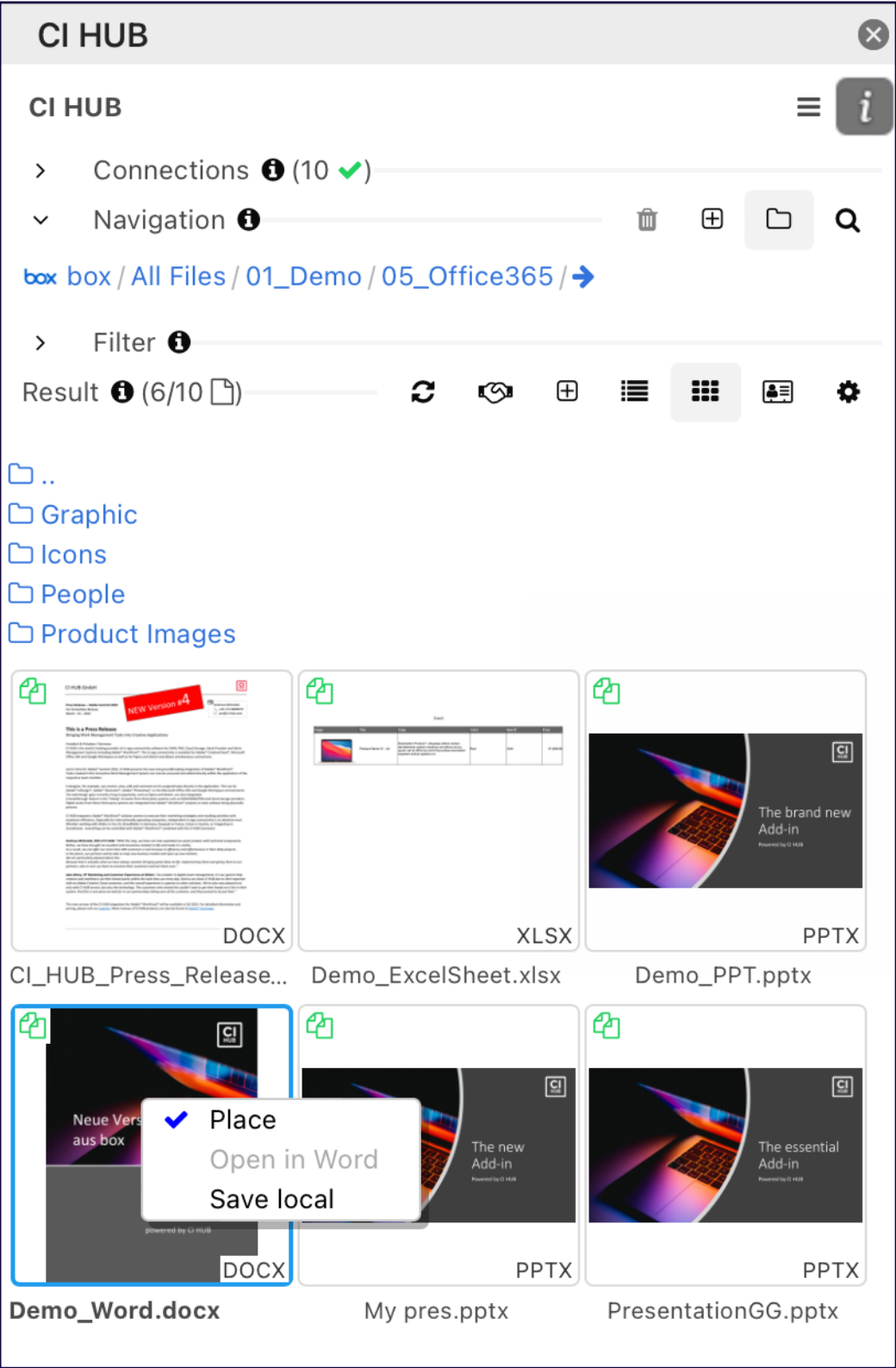
IMMEDIATELY NOTICEABLE BENEFITS

3. Reduce the file size of your presentation



Use the conversion option for low-resolution image placement and speed up the flow of your presentation.

**Benefit**  
Speed up the flow of your presentation and minimize the file size!



The rendition feature allows you to even place cover pages of Microsoft Word or Adobe InDesign documents as an image.

**Benefit**  
No more queries in the graphics department!

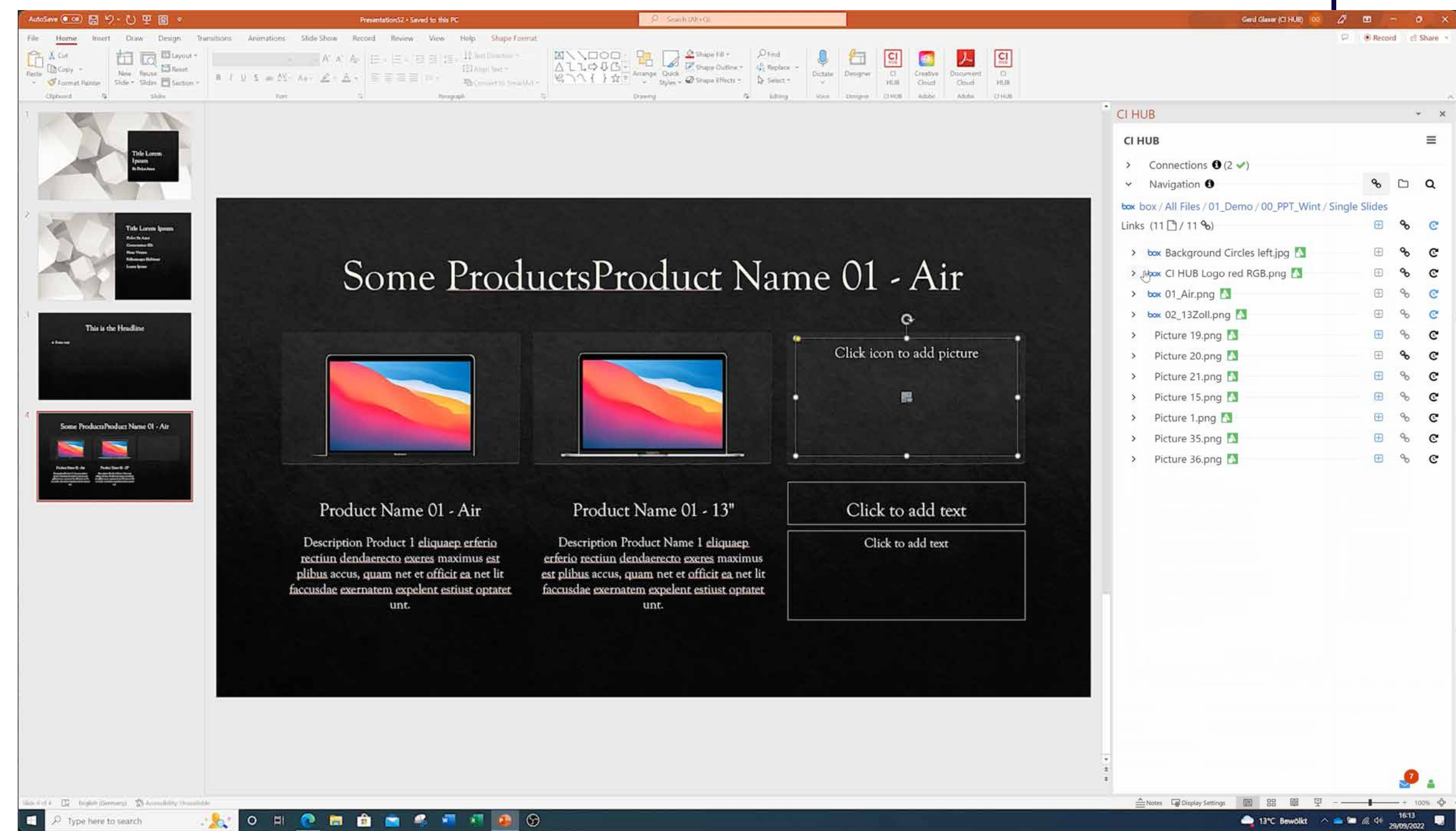




# SMART LINKING

## 4. Monitor all placed images and graphic elements

You can now run a complete inventory and view the status of all placed elements.



Having a full control over all placed elements stands for consistent and compliant use of content at any time!

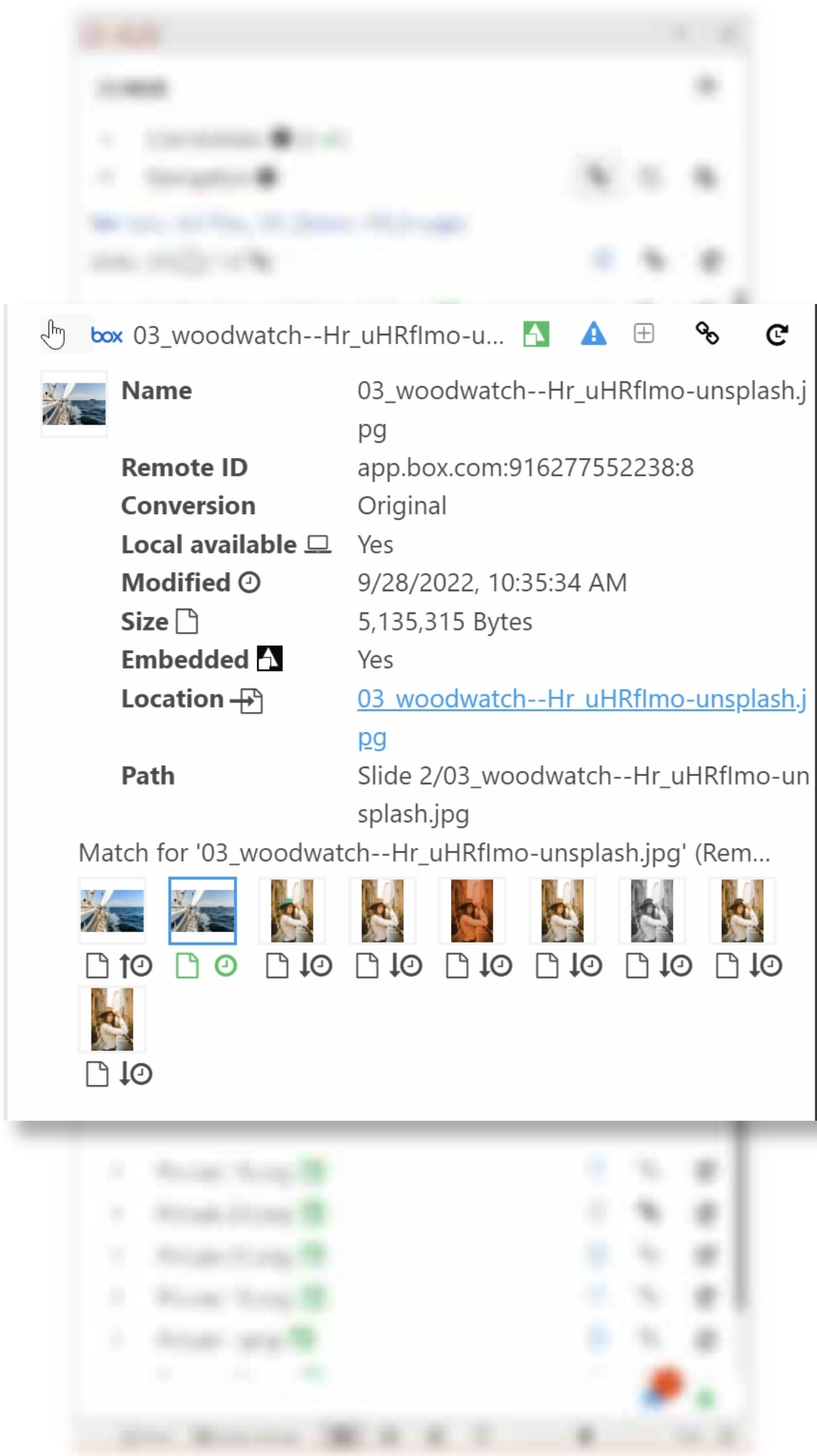
## CI HUB Smart Linking is groundbreaking – WHY?

Each image stays connected to the source system.

- This means in reverse, you'll get notifications when images:
- whave been changed in the source system.
  - no longer exist in the source system.
  - have been versioned in the source system.

## What about the already existing images in your presentation?

- These are also displayed and you have the option to:
- START a search, which locates the image in your source system and refreshes it automatically
  - TRIGGER an automatic process that pushes the image to the target system and links it back again in the presentation



## More groundbreaking features

- Visual control of existing versions of an asset (image or document)
- Relinking for newer versions or modified images
- Deep link to the system where the image originates
- Push button to move locally stored images to the target system
- Bulk operations



# SMART LINKING

Monitoring images and documents in a PowerPoint site has never been easier!  
No matter from which source system the digital assets have been placed.



## ASSET SOURCE

Connected Source systems

## SOURCE SYSTEM

Where the asset is hosted

CI HUB Connector

TASK MANAGERDATA MANGER

OneDriveSharePoint

Links (26 / 26)

Image 01.jpg

Image 02.jpg

Image 03.jpg

Legal icon.png

Master Logo CMYK.ai

Management team.psd

Sofa Master.jpg

Sofa Master.jpg

app.box.com:98745837:2

jpg\_1000x1000

Yes

-

23,500 bytes

No

Show

/Users/Mary/Docs/CI\_HUB/app.box.com/98745837:2/Sofa Master.jpg

MATCH FOR 'SOFA MASTER.JPG' (REMOTE ID)

Active

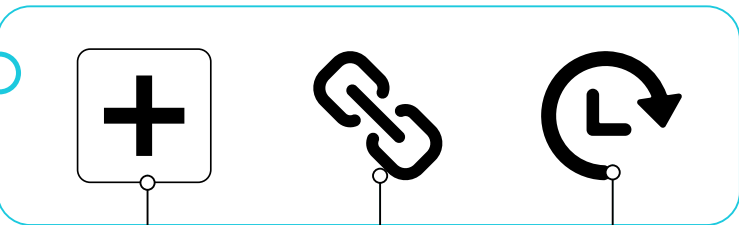
...

Oldest

Image 01.jpg

## BULK OPERATIONS

Add items, relink items, check items



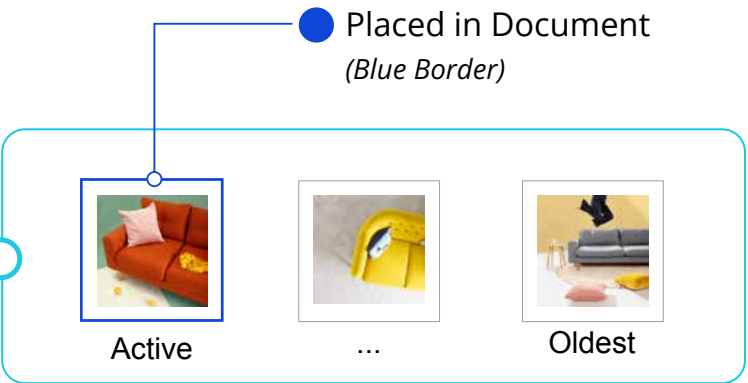
AVAILABILITY & VERSIONS  
(gather asset details, display source system)

RELINK FILE  
for a single asset

ADD TO SELECTED SOURCE SYSTEM  
(Import selected asset)

## DISPLAY FILE DETAILS

with a link to the asset within the document



VISUAL VERSION CONTROL  
Including time stamp

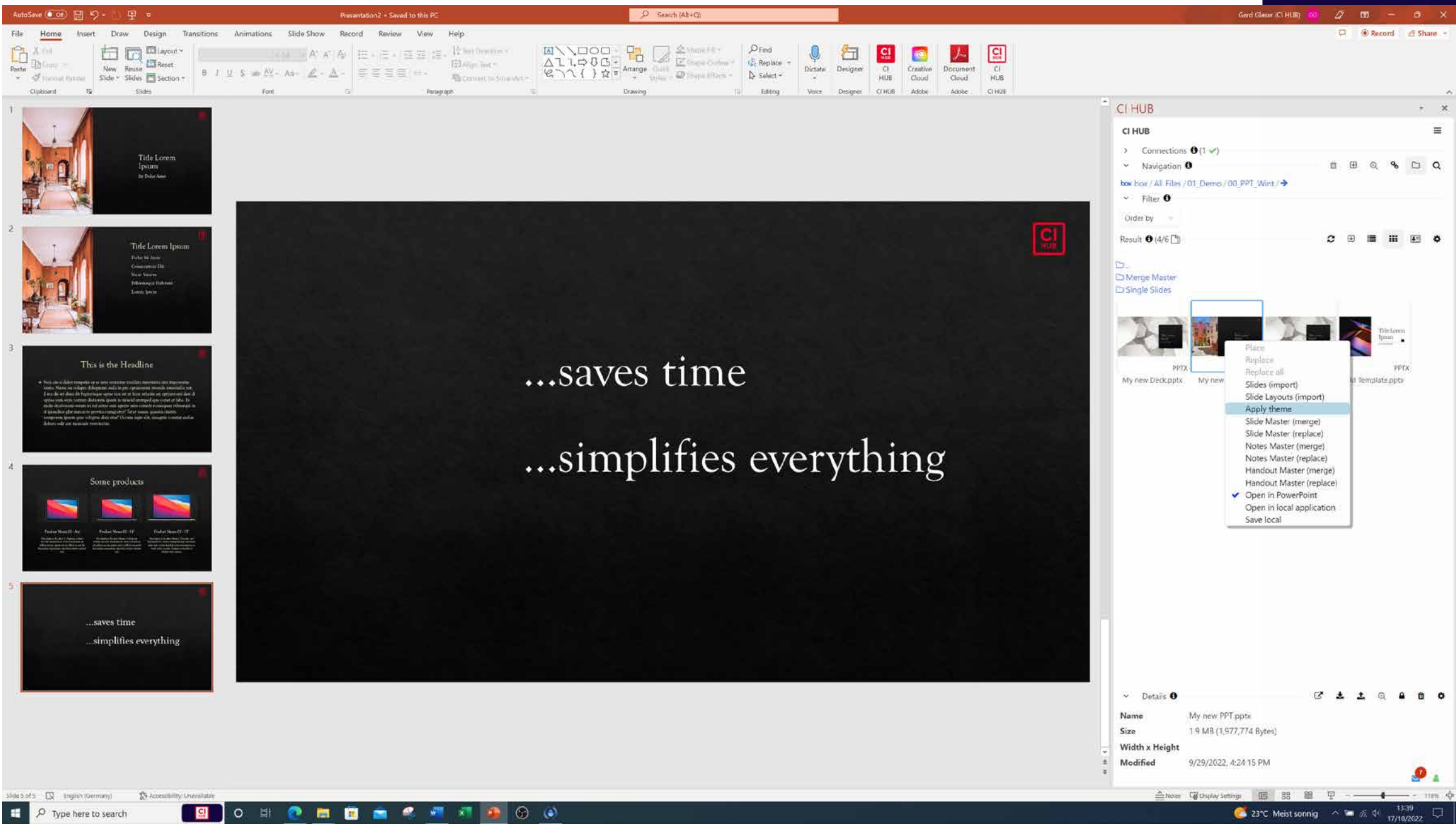
! = Warnings regarding availability, versions etc.





# MANAGING DECKS, SLIDES AND MASTER

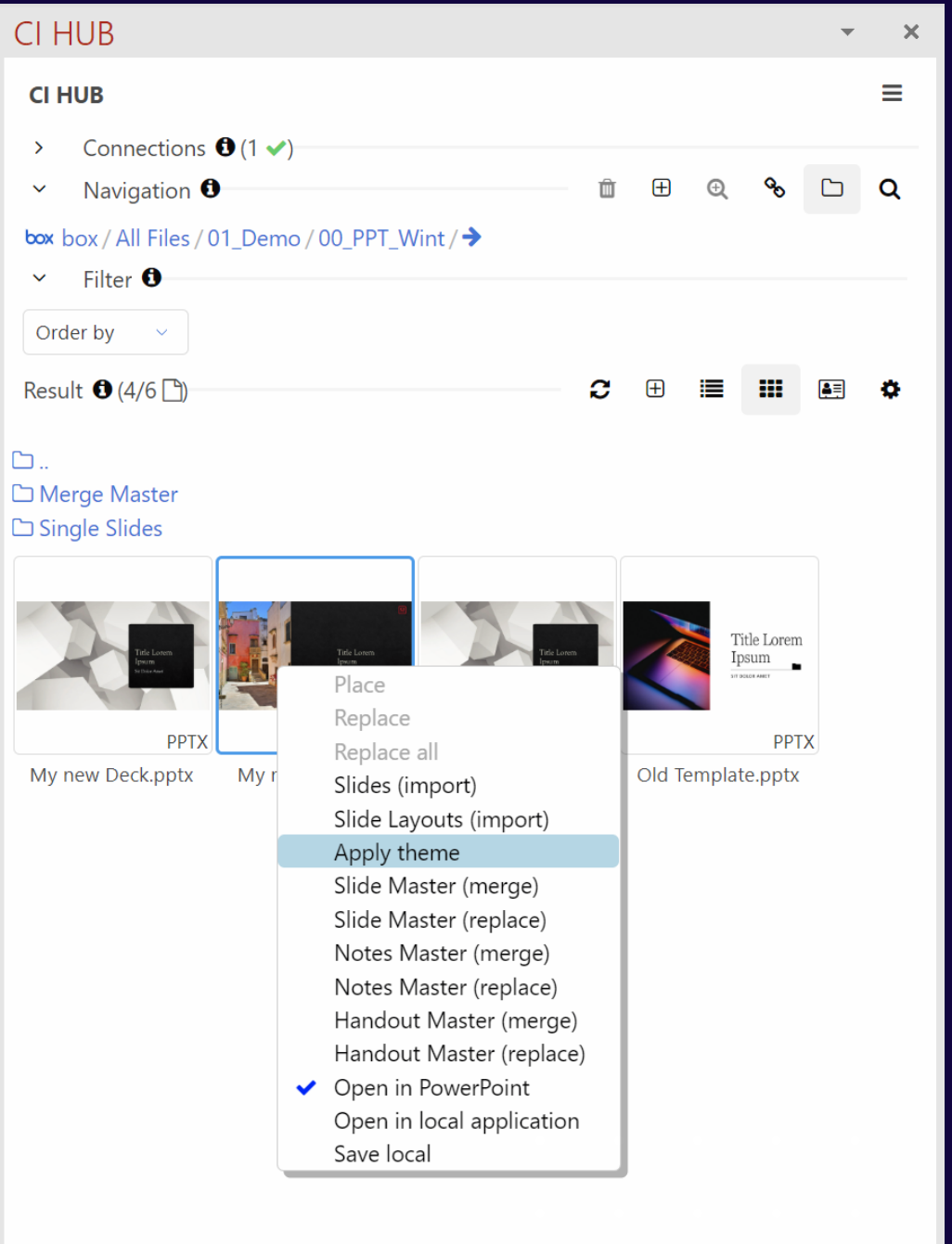
## 5. Use your DAM or Cloud Storage as Slide and Master Repository



The new "Apply Theme" feature allows you to adapt your presentation to your corporate design within seconds.

## Features available within PowerPoint:

- Open PPT-File from your target-system
- Push your PPT-File directly to your target system
- Create versions of your PPT-File in your target system
- Import Slides
- Import Slide Layouts
- Apply Themes
- Merge Slide Master
- Replace Slide Master
- Merge and replace features also available for Handouts and Notes

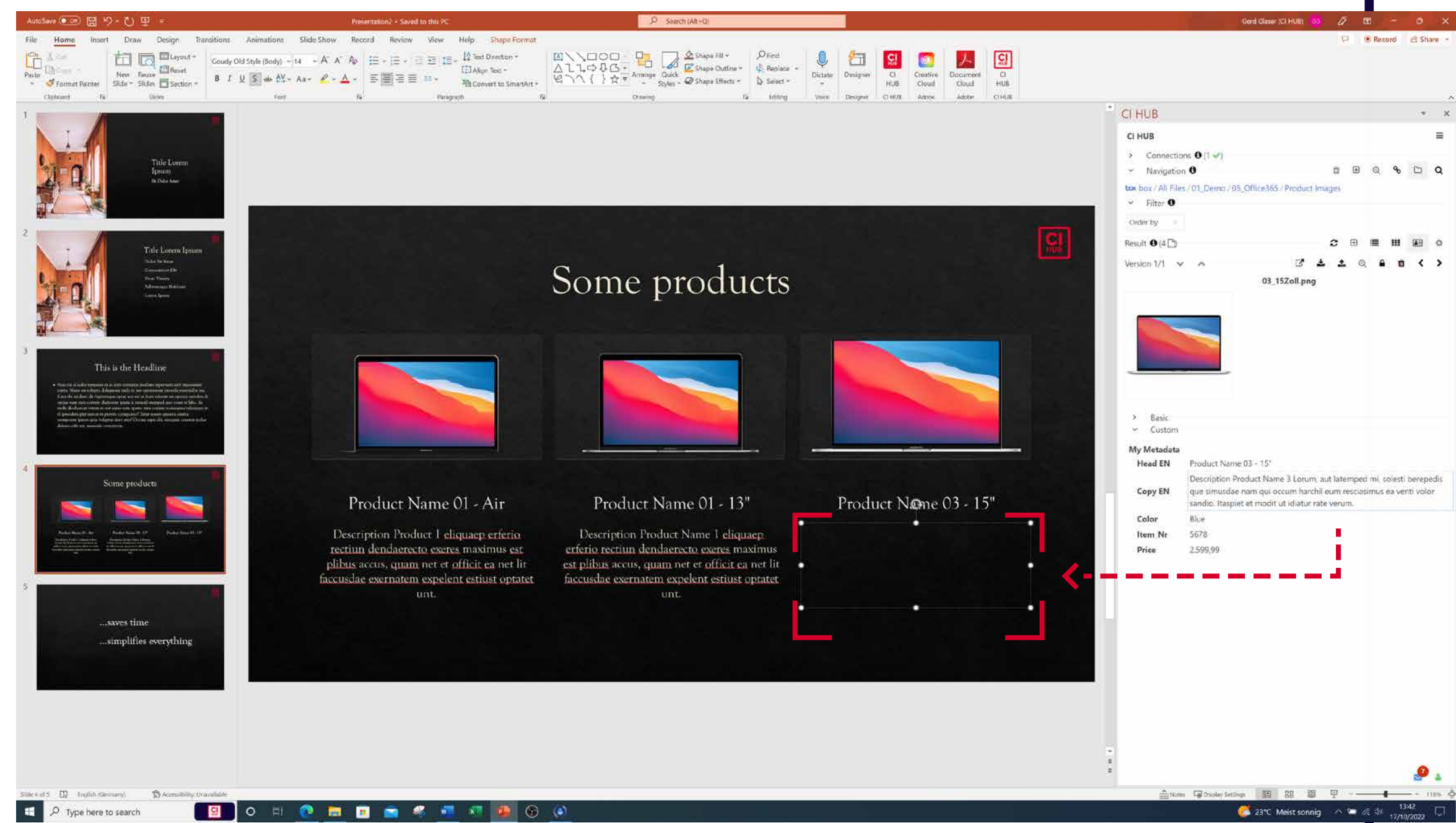


**Benefits**  
Saves a significant amount of time.  
Simplifies the creation of a presentation.  
  
It's a breeze to manage and update presentations!



METADATA

6. Using Metadata with Drag&Drop

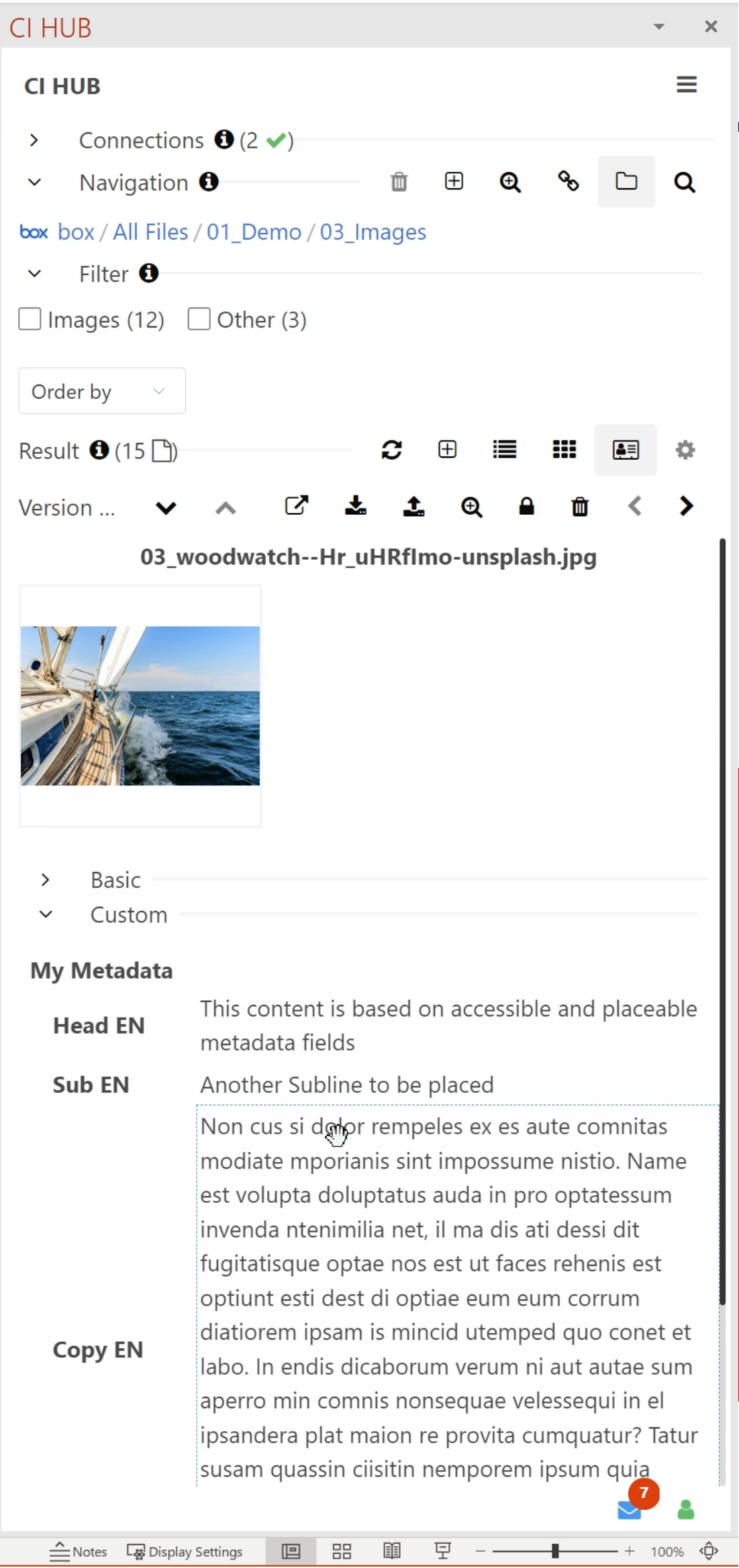


Metadata content coming from your connected system is placeable in your Presentation.

**Just Drag&Drop** the text onto your slide or into a text frame on your slide and the text will be

automatically formatted. Perfect for copyright-information, product information or image descriptions.

CI HUB supports custom-metadata and language switches.



**Benefits**  
No more searching for copyright notices, product names, product descriptions.

Using the advantages of text attached to an image has never been easier!

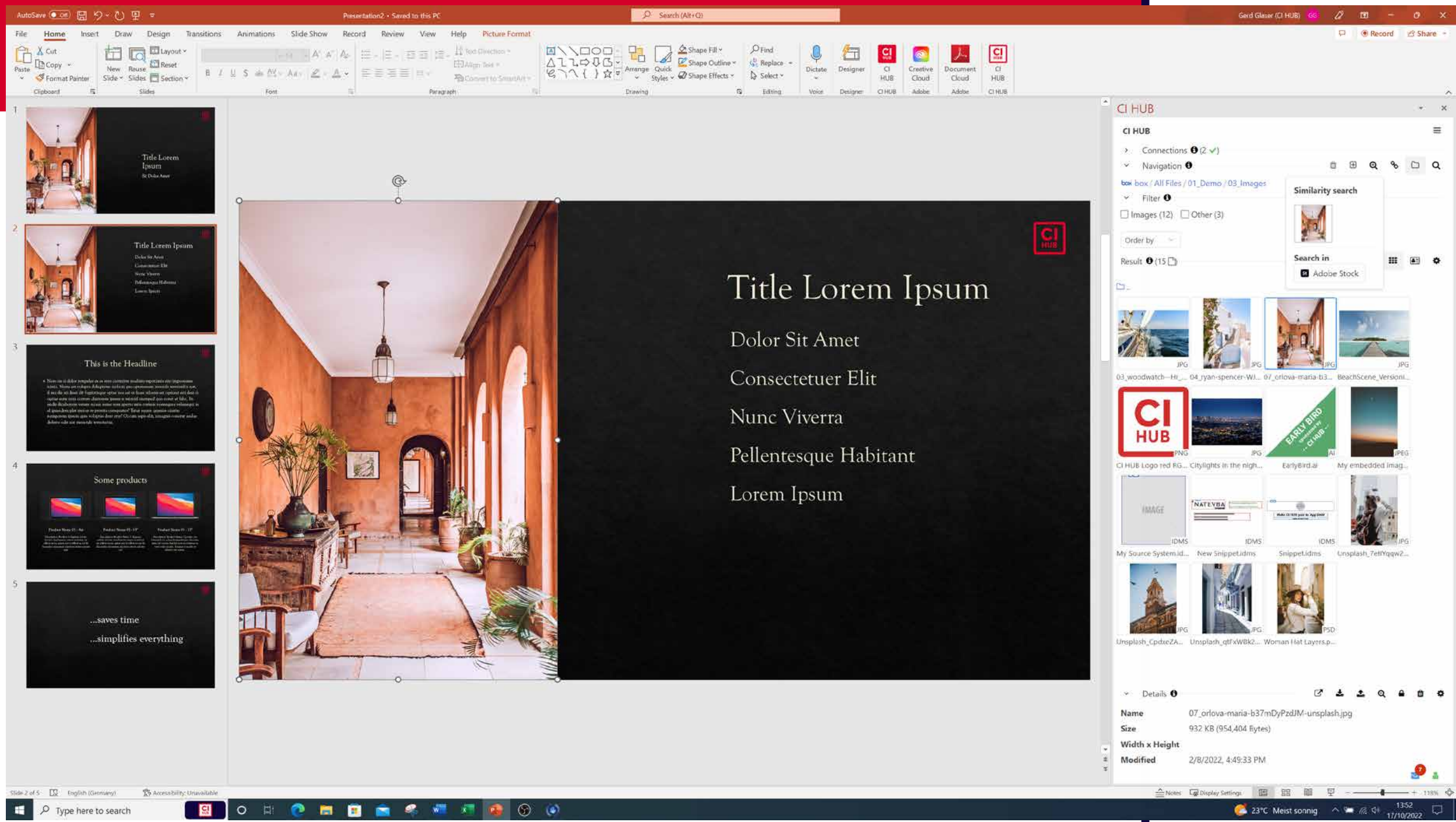




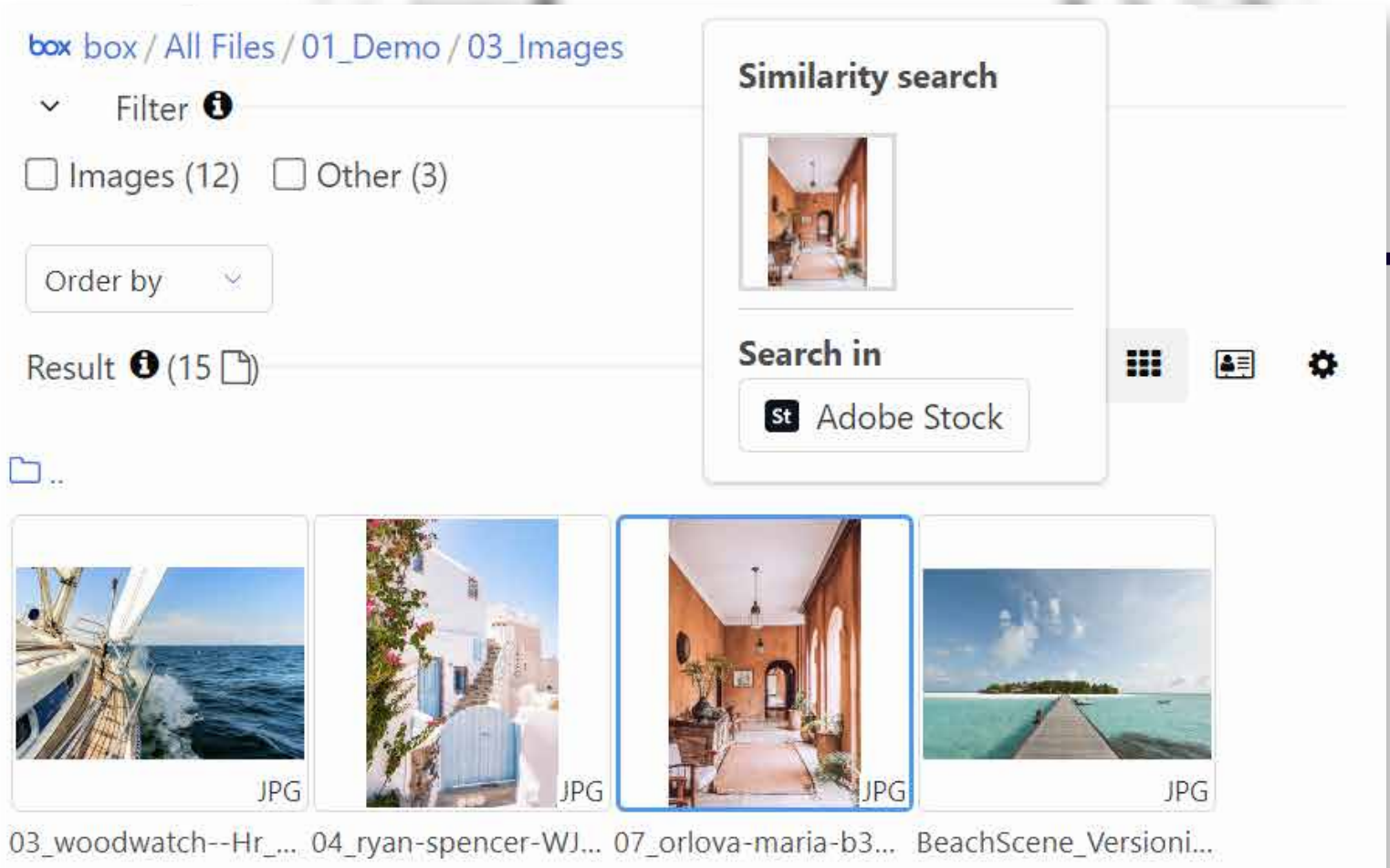
AND THERE IS MORE

# 7. Out of the box connected to

- Getty Images
- iStock
- Adobe Stock
- Shutterstock
- Unsplash



# 8. Similarity Search



Select an image in your presentation, tap the similarity search button, select the image provider and find & place similar images within seconds.



# The CI HUB Connector for Microsoft PowerPoint now works with all relevant filetypes:

<ul style="list-style-type: none"><li><b>Document</b> ['pptx', 'pptm', 'ppt', 'potx', 'potm', 'pot', 'ppsx', 'ppsm', 'pps', 'odp']</li><li><b>Image</b> ['emf', 'wmf', 'jpg', 'jpeg', 'jfif', 'jpe', 'png', 'bmp', 'dib', 'rle', 'gif', 'emz', 'wmz', 'tif', 'tiff', 'svg', 'ico', 'webp']</li><li><b>Audio</b> ['adts', 'adt', 'aac', 'aif', 'aifc', 'aiff', 'au', 'snd', 'flac', 'mid', 'midi', 'rmi', 'mka', 'mp3', 'mp2', 'm3u', 'm4a', 'wav', 'wma', 'wax', 'amr', 'asf']</li><li><b>Video</b> ['asf', 'asx', 'wpl', 'wm', 'wmx', 'wmd', 'wmz', 'dvr-ms', 'avi', 'mk3d', 'mkv', 'mov', 'mp4', 'm4v', 'mp4v', '3gp', '3gpp', '3g2', '3gp2', 'mpeg', 'mpg', 'mpe', 'm1v', 'm2v', 'mod', 'mpv2', 'mp2v', 'mpa', 'm2ts', 'm2t', 'mts', 'ts', 'tts', 'wmv', 'wvx', 'aac', 'adt', 'adts', 'dat', 'ivf', 'm4a']</li></ul>	<p><b>Supported media types</b></p> <ul style="list-style-type: none"><li>Images (Embedded, Linked)</li><li>Audio</li><li>Video</li></ul> <p><b>Supported views</b></p> <ul style="list-style-type: none"><li>Presentation Views<ul style="list-style-type: none"><li>Normal</li><li>Outline View</li><li>Slide Sorter</li></ul></li><li>Master Views<ul style="list-style-type: none"><li>Slide Master</li><li>Handout Master</li><li>Notes Master</li></ul></li></ul>	<p><b>Text</b> ['txt']</p>
-----------------------------------------------------------------------------------------------------------------------------------------------------------------------------------------------------------------------------------------------------------------------------------------------------------------------------------------------------------------------------------------------------------------------------------------------------------------------------------------------------------------------------------------------------------------------------------------------------------------------------------------------------------------------------------------------------------------------------------------------------------------------------------------------------------------------------------------	-------------------------------------------------------------------------------------------------------------------------------------------------------------------------------------------------------------------------------------------------------------------------------------------------------------------------------------------------------------------------------------------------------------------------------------------------------------------------	--------------------------------

Also, we have now integrated the full option to access the content of the very powerful XML Document format of Microsoft PowerPoint.

The all-new CI HUB Connector for Microsoft PowerPoint is optimized for all Windows Machines and installed in 30 seconds.

If you want to use Apple MAC OS, then please use the hybrid version of the CI HUB Connector.

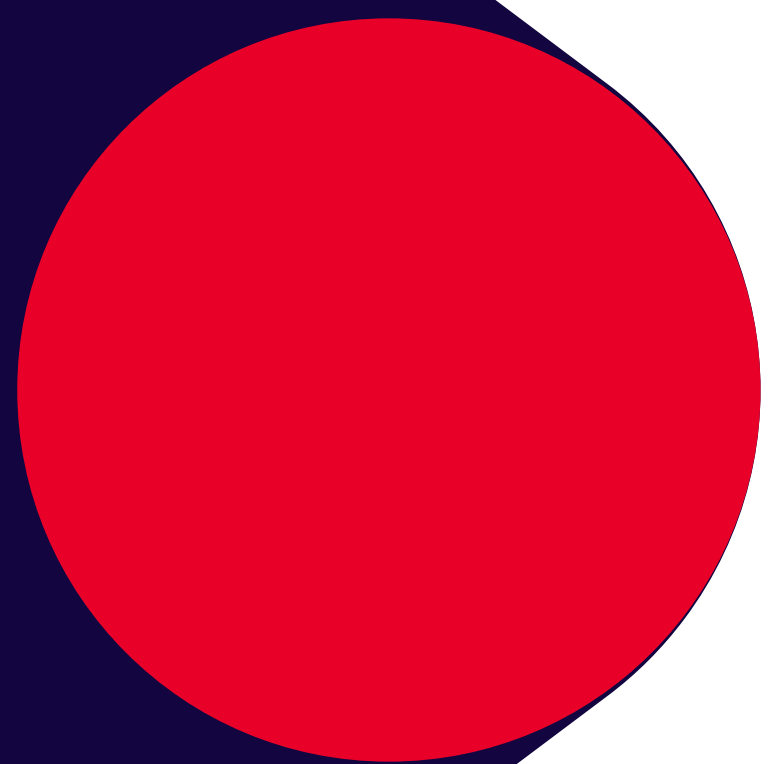
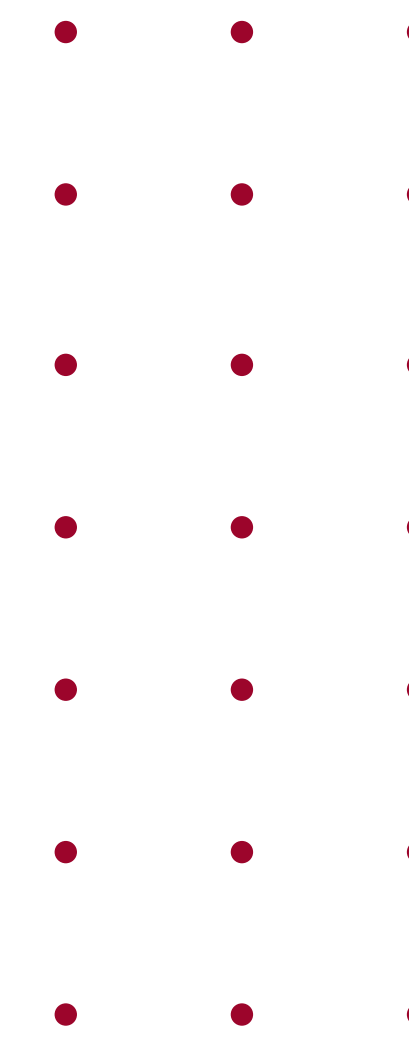
**All of this and much more are now at your fingertips.**

Get your free trial and install CI HUB in 30 seconds.

The CI HUB Connector is fully compliant with even the strongest security and data protection regulations!







THANK YOU!



**One access**  
to your digital  
asset ecosystem.

for more information visit [www.ci-hub.com](http://www.ci-hub.com)